

Leica Pegasus:Stream

Mobile reality capture



Leica Pegasus:Stream – Above & below ground mass digitisation

What is below ground affects what is going on above ground. You need to understand both. The Leica Pegasus:Stream not only makes buried objects visible but uncovers potential dangers, such as unintentionally damaging utility assets when digging. Increase safety and minimise unnecessary costs by avoiding utility outages.

With combined laser scanning and imagery above and ground penetrating radar below, you capture the complete view of a targeted area at the highest accuracy available. This mass digitisation of infrastructure assets, such as street signs above and pipes below, are captured in less time without needing to stop traffic, increasing the safety of the crew. The Pegasus:Stream has the potential to collect up to 100 km per day at 15 km/hr, providing digital documentation for GIS and CAD modelling. The Pegasus:Stream gives you the complete picture for accurate and current data collection, documentation and management.



MASS DIGITISATION

Leica Pegasus:Stream is the only vehicle towed reality capturing platform for an extensive 3D mapping offering unique advantages.

- Cost and time reduction with no need to block traffic or perform surveys during night
- Increased safety for operators by moving them from the field inside the vehicle
- Massive array of 40 antennas in two polarisations for simultaneous detection of main and junction pipes in one path
- GIS and CAD based outputs for an efficient map production



Manage your assets

The Pegasus:Stream gives you the complete picture for accurate and current data collection, documentation and management. With combined laser scanning and imaging above and ground penetrating radar below, you capture the complete view of a targeted area at the highest available accuracy. This mass digitisation of infrastructure assets are captured in less time increasing the safety of the crew.



Find buried objects

The Pegasus:Stream not only makes buried objects visible but uncovers potential dangers, such as unintentionally damaging utility assets when digging to minimise unnecessary costs by avoiding utility outages. Unlike sole cable locators, it can detect any material, metal or otherwise, up to 10 m underground whilst continuously flowing with traffic to capture complete views and without blocking the road.

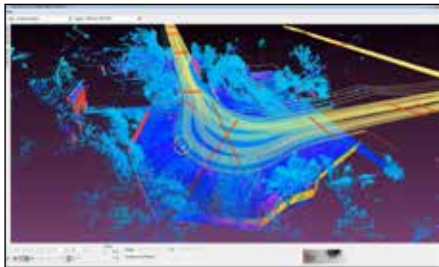
Easy to use - Integrated hardware and software for fast setup and data delivery



INTEGRATED ACQUISITION WORKFLOW

Own complete control over the mission and system health with a comprehensive cockpit.

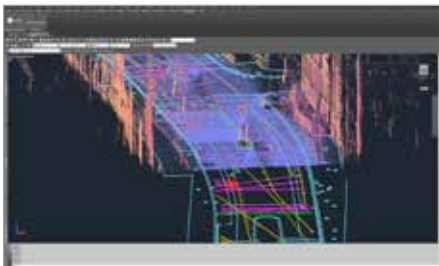
- GPR C-Scan and B-Scan for longitudinal and vertical pipes
- Real time tomography (time slices)
- Acquire up to 256 Mpx panoramic per second
- Create 3D point clouds with 1 Mio measurements per second



GIS & CAD INTEGRATION

Pegasus:Stream offers a dual workflow for GIS and CAD assuring fast and intuitive data handling.

- Identified targets can be automatically transferred to CAD or GIS for professional SUE / utility mapping
- Leverages automatic feature extraction of Pegasus:MapFactory software suite for above ground feature extraction



SURVEY GRADE GEOLOCATION

Data collection takes count of geological characteristics

- Pitch, roll and yaw are measured with an high-end inertial measurement unit (IMU)
- Accurate to as little as 5 % of the pipe depth, Pegasus:Stream detects assets precisely up to 10 m depth



Uncover network leakages

Increase efficiency of water networks and reduce revenue loss by measuring density changes underground uncovering leakages. With laser scanning above and ground penetrating radar below, you can potentially collect up to 100 km per day at 15 km/hr to periodically inspect your complete network in a single pass providing accurate digital documentation for GIS and CAD modelling



Detect cavities & foundation loss

Reduce efforts and detect cavities before they turn into sinkholes avoiding time consuming and expensive repairs. Pegasus:Stream detects loss of foundation and lateral extents of beneath paved roadways providing GPR data for the below ground and images and 3D point cloud to precisely detect and correlate underground and surface behavior.

Revolutionising the world of measurement and survey for nearly 200 years, Leica Geosystems creates complete solutions for professionals across the planet. Known for premium products and innovative solution development, professionals in a diverse mix of industries, such as surveying and engineering, safety and security, building and construction, and power and plant, trust Leica Geosystems to capture, analyse and present smart geospatial data. With the highest-quality instruments, sophisticated software, and trusted services, Leica Geosystems delivers value every day to those shaping the future of our world.

Leica Geosystems is part of Hexagon (Nasdaq Stockholm: HEXA B; hexagon.com), a leading global provider of information technologies that drive quality and productivity improvements across geospatial and industrial enterprise applications.



Illustrations, descriptions and technical data are not binding. All rights reserved.
 Printed in Switzerland – Copyright Leica Geosystems AG, Heerbrugg, Switzerland, 2015.
 836097en – 06.16



Leica Pegasus:Stream
 Mobile reality capture



Leica Pegasus:Two
 Mobile reality capture



Leica ScanStation P30/P40
 Because every detail matters



Leica Pegasus:Backpack
 Mobile reality capture

Leica Geosystems AG
 www.leica-geosystems.com



- when it has to be **right**

